

SIEMENS



BACnet Pressurized Room Controller (PRC)

**PRC-OAVS with Slow Floating
Damper Control, AOV or
Floating Reheat, Optional
Discharge Control and Optional
AOV Perimeter Radiation,
Application 6773**

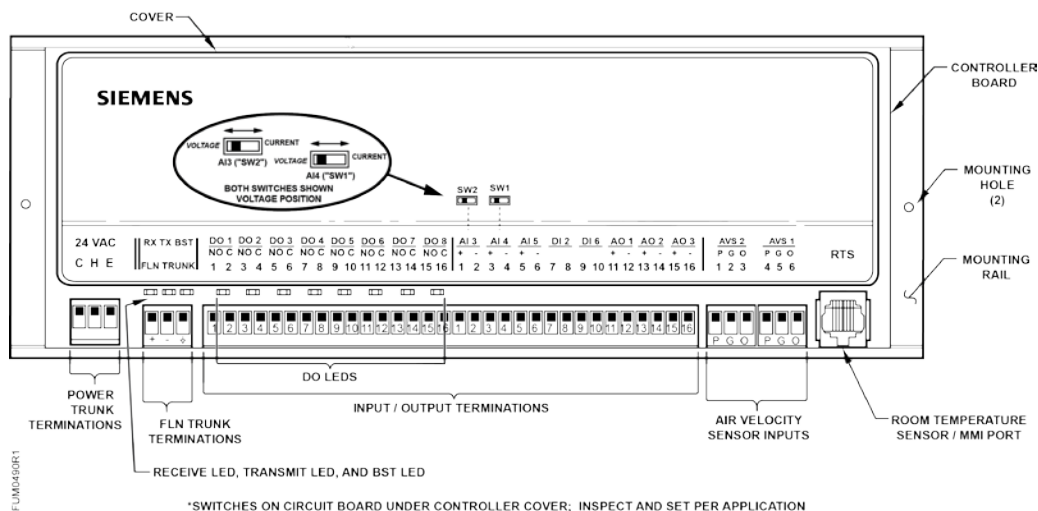
Start-up Procedures

Table of Contents

Before You Begin.....	5
Verifying Power.....	6
Verifying Slave Mode Application Number	6
Setting the Application	6
Setting the Mode of Operation.....	6
Specifying Motor Setup.....	7
Setting Reheat Valve Configuration	8
Radiation Valve Configuration	8
MODHTG FLO.....	9
Wall Switch	9
Setting Airflow Setpoints.....	9
Setting Volume Differential Setpoints	10
External Flow Values	10
Setting TRACK MODE.....	11
Setting TRACK METHOD.....	12
Calculating Exhaust Flow Setpoint	12
Calculating Supply Flow Setpoint	13
Ventilation	14
Setting Duct Area.....	14
Setting Flow Coefficients	14
Automatic Calibration Option	15
Setting up External Airflow Variables	16
Other Supply and Other Exhaust	16
Setting Volume Differential Setpoints.....	16
Setting MIN and MAX Airflow Setpoints.....	17
Offboard Air Module.....	18
Tuning the Flow Loops	18
Setting Discharge Temperature Control	18
Selecting Options for Room Unit Setpoints	19
Standard/Absolute Setpoint Mode (Digital Room Unit).....	20
Warmer/Cooler Setpoint Mode (Digital Room Unit)	20
Standard/Absolute Setpoint Mode (Analog or Digital Room Unit)	21
Warmer/Cooler Setpoint Mode (Analog Room Unit Only)	22
Setting STPT SPAN.....	23
Setting Room Temperature Control.....	23
Room Temperature Offset (Optional)	23
Room Temperature Setpoint Limits	24
Setting RH Calculation.....	24
Setting SENSOR SEL.....	25

Setting HC.ENDIS.....	25
REHEAT START, REHEAT END, FLOW START, FLOW END (Optional)	25
Configuring Perimeter Radiation Heating (Optional)	26
Setting Room Pressurization	27
AVS FAILMODE	28
Alarms	28
Ventilation Alarm	28
Hardware Switch	29
Pressurization Alarm	29
Local Annunciation	30
Network Alarms	31
Configuring BACnet Parameters	31
Auto Discover and Auto Addressing	32
Commissioning a Controller	35
Flashing Controller Firmware.....	37
Start-up Notes	38

Before You Begin



Generic Controller I/O Layout. See *Wiring Diagram* for application specific details.

At the job site, locate the major control system and the mechanical and electrical drawings. These components include valves, motors, and any other components working in conjunction with the BACnet Pressurization Room Controller (PRC).

Verify that the PRC input/output (I/O) points are wired per the installation instructions.



NOTES:

Application 6773 contains points with point numbers greater than 99. WCIS 4.0 must be used to view and configure these points. Point numbers greater than 99 are only available for display with field panel firmware 3.2.5 or higher and workstation revision 3.12 or higher.

These applications can be set up to operate without a supply air box or without a general exhaust box. See the Application Notes section for information on how to set up the controller to operate this way.



NOTE:

Update each controller at the field panel immediately after you have completed the controller start-up procedures and have made all other changes to the controller's point database, including balancing, tuning, and so on.

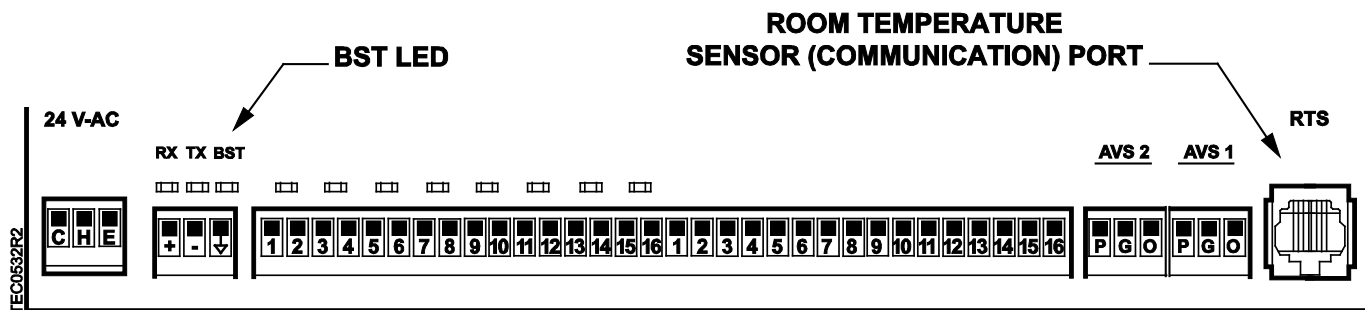


NOTE:

Application 6773 can be set up to operate with or without a discharge loop, and with or without perimeter radiation heating. Reheat may be configured as analog or floating.

Verifying Power

1. Verify that the controller has 24 Vac power and that the fuse has been inserted into the trunk or that power to the transformer is ON.
2. Verify that the Basic Sanity Test (BST) LED on the controller flashes once per second.



Verifying Slave Mode Application Number

1. Plug the HMI into the Room Temperature Sensor port.
2. Verify that Application 6775 (Slave Mode) is running at the controller.

Setting the Application

1. Set APPLICATION to the desired number.
 - Application 6773: BACnet PRC-OAVS with Floating Damper, AOV or Floating Reheat, (optional) Discharge Temperature Control and AOV Perimeter Heating
2. Set CTLR ADDRESS to the correct value obtained from the controller schedule.
 - Each controller must have a unique address.
 - Typical values are from 00 to 127 for master and 128 to 254 for slave, 255 is reserved.

Setting the Mode of Operation

Set the desired Mode of operation:

Mode 1: VAV PRC with reheat controlled by room temperature. No discharge temperature sensor, no discharge loop, and no perimeter radiation heating. To operate in Mode 1:

- Set DISCH P GAIN = 0 and set DISCH I GAIN = 0. (No gains being set implies no discharge loop).

Mode2: VAV PRC with reheat controlled by discharge loop. A discharge temperature sensor is required. Discharge reheat is modulated from discharge min to discharge max as heating load increases. There is no perimeter radiation. To operate in Mode 2:

1. Set either (or both) DISCH P GAIN or DISCH I GAIN to a non-zero value. (Non-zero gains imply a discharge loop is being used). The factory default gains are P gain = 2.0; I gain = 0.02.
2. Set RAD START and RAD END both = 0.



NOTE:

Perimeter radiation is disabled when RAD START = RAD END. You can use any value from 0 to 100. Setting both of these points to 0 instead of another value makes it a little easier to quickly “see” in the point list that they are equal and that there is zero radiation heat.

Mode 3: VAV PRC with reheat controlled by discharge loop, plus perimeter radiation heating. A discharge temperature sensor is required. As the room temperature loop calls for heat, discharge reheat is modulated from discharge min to discharge max and perimeter radiation is also controlled. Except for perimeter radiation, Mode 3 and Mode 2 are the same. To operate in Mode 3:

1. Set either (or both) DISCH P GAIN or DISCH I GAIN to a non-zero value. (Non-zero gains imply a discharge loop is being used). The factory default gains are P gain = 2.0; I gain = 0.02.
2. Set RAD END > RAD START. (The default values for RAD START and RAD END are 30 and 60 respectively. See *Perimeter Radiation Heating* for information on using different values for RAD START and RAD END.)

Specifying Motor Setup



NOTE:

In Application6773, MTR SETUP determines whether the reheat signal output from the controller is floating (DOs 5 and 6) or analog (AOV1). If Motor 3 is not enabled, the reheat signal is automatically converted to a 0-10V signal and routed to AOV1, and DOs 5 and 6 are spare (they are spare but they cannot be used as an additional motor). If MTR SETUP is set to a value that enables Motor 3 (DO 5 and DO 6), then the reheat signal is floating and AOV1 is spare.

Use the values in *Additive Values that Determine the Value of MTR SETUP Table* to determine the value for MTR SETUP. The values are additive. For example, if you want to have Motor 1 (DOs 1 and 2) enabled, Motor 2 (DOs 3 and 4) enabled and reversed, and AOV control of reheat (Motor 3 not used), you would set MTR SETUP equal to 13. This is because the Motor 1 enable value is 1, the Motor 2 enabled and reversed value is 12, and the Motor 3 not used value is 0. (1 + 12 + 0 = 13.)

Additive Values that Determine the Value of MTR SETUP.			
	Not Used	Enabled	Enabled and Reversed
Motor 1 (supply damper) (DO 1 and DO 2)	0	1	3
Motor 2 (exhaust damper) (DO 3 and DO 4)	0	4	12
Motor 3 (reheat valve)	0*	16	48

Additive Values that Determine the Value of MTR SETUP.			
	Not Used	Enabled	Enabled and Reversed
(DO 5 and DO 6)	(AOV1)		
*This is the Motor 3 additive value if reheat is to be controlled by AOV1.			

Setting Reheat Valve Configuration

If reheat uses floating control (Motor 3), skip this section.

Refer to the reheat valve-actuator's technical literature for specific open/close voltages. Otherwise, try different voltages by entering them into AOV1 and checking the action of the actuator. You are looking for the correct open/close voltages, not just whether 0 volts closes the actuator and 10 volts opens it, or vice versa. If 1 volt drives the actuator full closed (or full open), and 8 volts drives it full open (or full closed), then those are the voltages you will enter into AOV1 OPEN and AOV1 CLOSE. (Note that 1 and 8 volts is just an example; actual voltages will depend upon the actuator.)

1. Set AOV1 OPEN to the correct voltage value.
2. Set AOV1 CLOSE to the correct voltage value.
3. Verify operation of the reheat valve.
 - ⇒ Override VALVE CMD to **0** and verify that the valve closes.
 - ⇒ Set VALVE CMD to **100%** and verify that the valve opens.
 - ⇒ Release **VALVE CMD**.

Radiation Valve Configuration

If the installation has no perimeter radiation, skip this section.

Refer to the perimeter radiation heating valve-actuator's technical literature for specific open/close voltages. Otherwise, try various voltages by entering them into AOV2 and checking the action of the valve actuator. You are looking for the correct open/close voltages, not just whether 0 volts closes the actuator and 10 volts opens it, or vice versa. If 1 volt drives the actuator to full closed (or full open), and 8 volts drives it full open (or full closed), then those are the voltages you will enter into AOV2 OPEN and AOV2 CLOSE. (Note that 1 and 8 volts is just an example; actual voltages will depend upon the actuator.)

1. Set AOV2 OPEN to the correct voltage value.
2. Set AOV2 CLOSE to the correct voltage value.
3. Verify operation of the radiation valve. Override RAD VALV CMD to 0 and verify that the valve closes. Set RAD VALV CMD to 100% and verify that the valve opens.
4. Release RAD VALV CMD.

MODHTG FLO

As a safety feature for jobs where reheat is an electric element, these applications include MODHTG FLO to ensure that adequate airflow is present before reheat is energized. The value is in feet-per-minute (fpm) and is defaulted to 300 fpm, which means that the airflow must be at least 300 fpm before heating output is enabled. (Using fpm (feet per minute) rather than cfm (cubic feet per minute) makes the feature not dependent on duct size.)

A value of 300 fpm equates to the following cfm:

In a 12 inch diameter duct and a typical flow coefficient of 0.7, 300 fpm equates to 158 cfm.

12 inch diameter = 0.75 sq ft

$0.75 \text{ sq ft} * 300 \text{ fpm} * 0.7 = 158 \text{ cfm}$

In an 8 inch diameter duct and a typical flow coefficient of 0.7, 300 fpm equates to 74 cfm.

8 inch diameter = 0.35 sq ft

$0.35 \text{ sq ft} * 300 \text{ fpm} * 0.7 = 74 \text{ cfm}$

The default value of 300 fpm can be raised or lowered as required based on the manufacturer's minimum flow recommendation for a given electric reheat element. As the fpm changes by a certain percentage, the associated minimum cfm for a given duct size will also change by that same percentage.

If the application uses hot water heat rather than electric heat, then MODHTG FLO may be set lower than the default value of 300. This would allow reheating to occur even if for some reason the box is operating well below its designated minimum flow setting.

Note that this safety applies to the reheat heating only. The perimeter heating will continue to function as the application dictates even if the safety has disabled the reheat heating.

Wall Switch

If a wall switch will be used for day/night (occ/unocc) control, enable it by setting WALL SWITCH to **YES**.

Setting Airflow Setpoints

Using values from the job specifications, program the following points:

1. GEX MAX. Set to the maximum flow that the exhaust can accommodate. This is the highest value that the exhaust setpoint will be set to in order to maintain temperature and pressure.
2. GEX MIN. Set to the lowest value that the exhaust can reliably measure.
3. CLG FLO MAX. Set to the maximum flow for cooling mode.
4. CLG FLO MIN. Set to the minimum flow for cooling mode. The value should be set no lower than the minimum ventilation required for the space. In specific circumstances, the actual flow may drop below this value to maintain pressurization.
5. HTG FLO MAX. Set to the maximum flow for heating mode.

6. HTG FLO MIN. Set to the minimum flow for heating mode. The value should be set no lower than the minimum ventilation required for the space. In specific circumstances, the actual flow may drop below this value to maintain pressurization.

**NOTE:**

Since HTG FLO MAX is used as the upper value for supply pressurization in the heating mode, care should be taken in setting this value. Setting HTG FLO MAX equal to HTG FLO MIN to provide minimum flow in heating mode may be too restrictive when trying to maintain positive pressure. Instead, if minimum airflow is desired in the heating mode, set FLOW START = FLOW END. Setting FLOW START = FLOW END will assure that minimum flow is used for the temperature control, while allowing HTG FLO MAX to be set at a level higher than HTG FLO MIN to make additional flow available if needed for pressurization purposes.

Setting Volume Differential Setpoints

**NOTE:**

Because *volume difference* is defined as total exhaust minus supply, VOL DIF STPT is a positive value when the room is negatively pressurized, and vice versa.

The application supports selection between two volume differential setpoints to provide two different room pressurization states.

The two volume differential setpoint values must be entered into PRS1DIF STPT and PRS2DIF STPT.

1. Set PRS1DIF STPT to desired pressurization. (Entered as a CFM differential.)
2. Set PRS2DIF STPT to desired pressurization. (Entered as a CFM differential.)

**NOTE:**

The physical switch on DI 6 selects which value the application will use. The position of DI 6 is indicated by PRESS STATE. When PRESS STATE is "off", PRESS STATE has the value of PRS1 and VOL DIFF STPT is set to PRS1DIF STPT. When PRESS STATE is "on", PRESS STATE has the value of PRS2 and VOL DIFF STPT is set to PRS2DIF STPT.

A software command to PRESS STATE can override the physical position of the switch on DI 6. Note that no switch present on DI 6 is equivalent to a switch being there but always in the 'off' (PRS1) setting.

External Flow Values

Airflows not connected to the controller must be taken into consideration when pressurizing the room, including snorkels, canopies, as well as other supplies, such as offices within the lab space controlled by constant volume controllers. Since these inputs are not connected to the controller, the combination of their values must be entered into OTHER SUP and OTHER EXH so the controller can properly control the lab space.



NOTE:

If these airflow values change slowly or predictably (for example, VAV temperature control and/or occ/unoc differences), steps can be taken using PPCL to have the changes sent over the network to update OTHER EXH and OTHER SUP with the new values

Setting TRACK MODE

Track mode (TRACK MODE) can be either Supply Tracks Exhaust (STE) or Exhaust Tracks Supply (ETS).

- Supply Tracks Exhaust mode is useful when trying to maintain negative pressurization.
- Exhaust Tracks Supply mode is useful when trying to maintain positive pressurization.

During Supply Tracks Exhaust, the supply air volume “tracks” or follows the exhaust air volume. If the exhaust air is “broke” (for instance, the general exhaust box damper is stuck open or stuck closed) the supply air will be adjusted so VOL DIF STPT is maintained as much as possible.

The supply air volume cannot go lower than zero and the application will not allow it to go higher than OCC SUP MAX during occupied periods or UOC SUP MAX during unoccupied periods.

During Exhaust Tracks Supply, the general exhaust air volume “tracks” or follows the supply air volume. If the supply air is “broke” (for instance, the supply box damper is stuck open or stuck closed) the general exhaust air volume will be adjusted such that VOL DIF STPT is maintained as much as possible.

The general exhaust air volume cannot go lower than zero and the application does allow it to go higher than OCC GEX MAX during occupied periods or UOC GEX MAX during unoccupied periods.

Track mode can be different during occupied and unoccupied periods, depending on the value of TRACK MODE.

- Set TRACK MODE to the desired value. See the following table.

TRACK MODE Values.	
TRACK MODE (value)	Description
0 default	Always STE (Supply Tracks Exhaust), exhaust only.
1	STE during occupancy, ETS during the unoccupied period.
2	ETS during occupancy, STE during the unoccupied period.
3	Always ETS (Exhaust Tracks Supply), supply only.



NOTE:

If TRACK MODE is set greater than 3, it will default to 0.

Setting TRACK METHOD

The TRACK METHOD can be either FLOW or STPT. In most cases, TRACK METHOD should be set to FLOW.

When TRACK MODE is set up for **Exhaust Tracks Supply** flow tracking (ETS):

- TRACK METHOD = FLOW tracking; the general exhaust flow setpoint is calculated using the actual supply airflow being read at the controller.
- TRACK METHOD = STPT tracking; the general exhaust flow setpoint is calculated based on the setpoint for the supply terminal.

However, this module changes over to FLOW tracking mode if the supply cannot reach setpoint.

When TRACK MODE is set up for **Supply Tracks Exhaust** flow tracking (STE):

- TRACK METHOD = FLOW tracking; the supply flow setpoint is calculated using the actual general exhaust airflow being read at the controller.
- TRACK METHOD = STPT tracking; the supply flow setpoint is calculated based on the setpoint for the general exhaust terminal.

However, this module changes over to FLOW tracking mode if the general exhaust cannot reach setpoint.

- Set TRACK METHOD to **FLOW** or **STPT** as desired.

Calculating Exhaust Flow Setpoint

When **Supply Tracks Exhaust** (STE) flow tracking is used, the general exhaust airflow setpoint is calculated as follows:

- During VAV operation, the controller calculates GEX FLO STPT by looking at the value of TEMP CTL VOL and determining the general exhaust flow needed to pressurize the room. If TEMP CTL VOL is less than the active supply minimum, the controller ignores TEMP CTL VOL and calculates GEX FLO STPT based on the value of the active supply flow minimum.
- During CV operation, the controller ignores TEMP CTL VOL. Instead, it calculates GEX FLO STPT based on the value of the active supply flow minimum and the amount of general exhaust airflow needed to pressurize the room.



NOTE:

When Supply Tracks Exhaust (STE) flow tracking is being used, the controller does not allow GEX FLO STPT (or the actual general exhaust flow) to rise above the active general exhaust airflow maximum. **However, the general exhaust airflow minimum can be overridden in situations where doing so is necessary to maintain desired room pressurization.**

During VAV operation, the application calculates GEX STPT by looking at the value of TEMP CTL VOL and determining the general exhaust flow needed to pressurize the room.



NOTE:

When Supply Tracks Exhaust (STE) flow tracking is being used, the controller will not let the actual general exhaust flow rise above the active general exhaust airflow maximum regardless of the value of GEX STPT. **However, the controller allows the actual general exhaust flow to dip below the active general exhaust flow minimum if needed in order to maintain the desired room pressurization.**

When **Exhaust Tracks Supply (ETS)** flow tracking is used, the general exhaust airflow setpoint is calculated the same during both VAV and CV operation, as follows:

To calculate GEX FLO STPT, the controller determines the general exhaust airflow value that pressurizes the room based on the values of VOL DIF STPT, OTHER EXH, OTHER SUP and either SUP FLO STPT or SUP AIR VOL depending on the value of TRACK METHOD. GEX FLO STPT may not exceed the active general exhaust airflow maximum, but the currently active general exhaust airflow minimum (OCC GEX MIN or UOC GEX MIN) will be overridden if necessary to maintain the desired room pressurization.

When **Exhaust Tracks Supply (ETS)** flow tracking is used, the general exhaust airflow setpoint is calculated as follows:

To calculate GEX STPT, the application determines the general exhaust airflow value that pressurizes the room based on the values of VOL DIF STPT, OTHER EXH, OTHER SUP and either SUP STPT or SUP VOL depending on the value of TRACK METHOD. GEX STPT may not exceed the active general exhaust airflow maximum. If necessary, the general exhaust airflow minimum (GEX MIN), will be overridden to maintain the desired room pressurization.

Calculating Supply Flow Setpoint

To calculate SUP FLO STPT, the controller determines the supply flow value that pressurizes the room based on the values of VOL DIF STPT, OTHER EXH, OTHER SUP, and either GEX FLO STPT or GEX AIR VOL depending on the value of TRACK METHOD. SUP FLO STPT may not exceed the currently active supply airflow maximum.

When **Exhaust Tracks Supply (ETS)** flow tracking is used, the supply airflow setpoint is calculated as follows:

- During VAV operation, the controller calculates SUP FLO STPT by looking at the value of TEMP CTL VOL and determining the supply flow needed to pressurize the room. If TEMP CTL VOL is less than the active supply minimum, the controller ignores TEMP CTL VOL and calculates SUP FLO STPT based on the value of the active supply flow minimum.
- During CV operation, the controller ignores TEMP CTL VOL. Instead, it calculates SUP FLO STPT based on the value of the active supply flow minimum and the amount of supply airflow needed to pressurize the room.



NOTE:

Regardless of the flow tracking method (STE or ETS) being used, the controller does not let the actual supply airflow rise above the currently active supply airflow maximum. **However, the currently active supply airflow minimum (OCC SUP MIN or UOC SUP MIN) will be overridden if necessary to achieve desired pressurization.**

When **Supply Tracks Exhaust (STE)** flow tracking is used, the supply airflow setpoint is calculated as follows:

To calculate SUP STPT, the application determines the supply flow value that pressurizes the room based on the values of VOL DIF STPT, OTHER EXH, OTHER SUP, and either GEX STPT or GEX VOL depending on the value of TRACK METHOD. SUP STPT may not exceed the currently active supply airflow maximum (CLG FLO MAX or HTG FLO MAX depending on HEAT.COOL mode).

When Exhaust Tracks Supply (ETS) flow tracking is being used, the supply airflow setpoint is set to TEMP CTL VOL.



NOTE:

Regardless of the flow tracking method (STE or ETS) being used, the controller does not let the actual airflow rise above the currently active supply airflow maximum. **However, the currently active supply airflow minimum (CLG FLO MIN or HTG FLO MIN) will be overridden if necessary to achieve desired pressurization.**

Ventilation

Application 6773 does not have separate points for minimum ventilation. Verify that the values chosen for HTG FLO MIN and CLG FLO MIN have not been set below the minimum ventilation requirements. If necessary, the application raises the general exhaust flow to keep the supply flow from dropping below these minimums. However, the currently active supply minimum (HTG FLO MIN or CLG FLO MIN) may be overridden to maintain negative pressurization, if necessary.

Setting Duct Area



NOTE:

If the PRC will be operating as Supply only, with no General Exhaust box present, or if it will be operating as General Exhaust only with no Supply box present, then follow the instructions in the *Configuring Supply and General Exhaust* section before proceeding to the next section.

If provided, enter the duct area into SUPDUCT AREA and GEXDUCT AREA. Otherwise, use the following table to determine duct area.

Area =	Round Duct	Rectangular Duct
Area in Sq. Ft. (Dimensions in inches)	$(\pi \times R^2)/144$	Length \times Height/144
Area in Sq. M (Dimensions in centimeters)	$(\pi \times R^2)/10,000$	Length \times Height/10,000



NOTE:

When entering the TEC definition for a controller at the field panel, do not enter a duct area. (Choose **N** for none when prompted for the duct shape.) This controller does not send the value of air volume to the field panel in velocity (fpm). Instead, it uses volume (cfm) so a conversion is not necessary.

Setting Flow Coefficients

Follow the steps to set the supply and exhaust flow coefficients.

1. Set SUP FLO COEF to the appropriate value found in *Box Manufacturer Flow Coefficients Table*. This value is a starting point for the air balancer.
2. Compare the controller volume shown in SUP VOL to the actual volume obtained from the balancer's measurements. The controller volume should be within 5% of actual volume.

3. If necessary, adjust SUP FLO COEF until SUP VOL is within 5% of actual volume. If for example the balancer's measurements are 8% higher than the value shown in SUP VOL, then increase SUP FLO COEF by 8%. Repeat these steps as necessary until SUP VOL and actual volume are within 5%.
4. Repeat the above steps to set GEX FLO COEF, this time using GEX FLO COEF and GEX VOL instead of SUP FLO COEF and SUP VOL.

Box Manufacturer Flow Coefficients		
Manufacturer	Sensor Type	Value
Anemostat	2-pipe without orifice	0.79
	2-pipe with orifice	0.59
	Spider without orifice	0.73
	Spider with orifice	0.39
Carnes	2-pipe	0.66
	Flow cross	0.59
Carrier		0.59
E.H. Price/Siemens Industry Terminal Boxes		0.78
Environmental Technologies		0.79
Krueger		0.68
Metal Aire		0.72
Nailor Industries		0.69
Titus		0.60
Trane		0.66

Automatic Calibration Option

This only functions when using the OAVS. To set CAL SETUP, select the automatic calibration option that best meets the job's requirements from the following table. It is highly recommended that Option 4, the factory default mode, be used.

At the start of the calibration cycle, the controller automatically sets CAL AIR to **YES**. When the cycle is complete, it sets CAL AIR to **NO**.



NOTE:

The air velocity sensor should be calibrated at least once every 24 hours. Make sure that the sensor has been calibrated before balancing takes place, as this will affect the balancer's results.

CAL SETUP Options.	
CAL SETUP (value)	Description
0	Calibration occurs ONLY when the point CAL AIR is set to YES .
1	Calibration occurs when the field panel commands a day/night mode changeover.
2	Calibration occurs immediately after the override switch is depressed.

CAL SETUP Options.	
CAL SETUP (value)	Description
4 (factory default value)	Calibration occurs on the time interval set in the point CAL TIMER. Example: If CAL TIMER = 12, then the calibration period is 12 hours. Actual calibration is subject to a time delay based on the value of CTRL ADDRESS. See the example in Option 1. This is the recommended option when using a controller with an Autozero Module.

Setting up External Airflow Variables

In this section, the external airflow variables are configured.

This version of the PRC uses conventional supply and exhaust actuation (rather than high speed actuation). Therefore, it should be used only where rapid room response to pressure changes is not required.

Other Supply and Other Exhaust

Airflows not connected to the controller must be taken into consideration when pressurizing the room, including snorkels, canopies, as well as other supplies, such as offices within the lab space controlled by constant volume controllers. Since these inputs are not connected to the controller, the combination of their values must be entered into OTHER SUP and OTHER EXH so the controller can properly control the lab space.



NOTE:

If these airflow values change slowly or predictably (for example, VAV temperature control and/or occ/unoc differences), steps can be taken using PPCL to have the changes sent over the network to update OTHER EXH and OTHER SUP with the new values

- Set OTHER EXH and OTHER SUP using actual airflow values for any supply or exhaust equipment not connected to the controller that will remain constant.

Setting Volume Differential Setpoints



NOTE:

Because *volume difference* is defined as total exhaust minus supply, VOL DIF STPT is a positive value when the room is negatively pressurized, and vice versa.

The application supports selection between two volume differential setpoints to provide two different room pressurization states.

The two volume differential setpoint values must be entered into PRS1DIF STPT and PRS2DIF STPT.

1. Set PRS1DIF STPT to desired pressurization. (Entered as a CFM differential.)
2. Set PRS2DIF STPT to desired pressurization. (Entered as a CFM differential.)



NOTE:

The physical switch on DI 6 selects which value the application will use. The position of DI 6 is indicated by PRESS STATE. When PRESS STATE is “off”, PRESS STATE has the value of PRS1 and VOL DIFF STPT is set to PRS1DIF STPT. When PRESS STATE is “on”, PRESS STATE has the value of PRS2 and VOL DIFF STPT is set to PRS2DIF STPT.

A software command to PRESS STATE can override the physical position of the switch on DI 6. Note that no switch present on DI 6 is equivalent to a switch being there but always in the ‘off’ (PRS1) setting.

Setting MIN and MAX Airflow Setpoints



NOTE:

Airflow readings are most accurate when duct velocity is at least 350 fpm.

Minimum values in the Table *Min and Max Flow Limit Points* should be set up with this in mind.

See the Application Notes section for more information when using Supply or Exhaust only.

1. Using values from the job specifications, enter the minimum and maximum flow limits for occupied and unoccupied conditions in each air terminal. Enter values for the points in Table *Min and Max Flow Limit Points*.
2. If an unoccupied mode is not specified, set the UOC values equal to the OCC values.
3. If using supply or exhaust only, see the Start-up Notes [→ 38] sections for setup details.

Min and Max Flow Limit Points.	
OCC SUP MAX	OCC SUP MIN
OCC GEX MAX	OCC GEX MIN
UOC GEX MAX	UOC GEX MIN
UOC SUP MAX	UOC SUP MIN

The equation relating airflow to air velocity is:

$$\text{Airflow (cfm)} = \text{Velocity (fpm)} \times \text{Duct Area (sq. ft.)} \times \text{Flow Coefficient}$$

Therefore, for best results: $\text{Airflow} \div (\text{Duct Area} \times \text{Flow Coefficient})$ should be > 350 .

Example

$$\text{UOC SUP MIN} \div (\text{SUPDUCT AREA} \times \text{SUP FLO COEF}) > 350.$$

Offboard Air Module

When Autozero solenoid(s) from Offboard Air Module(s) are wired to DO 8 and CAL MODULE = YES, the Autozero function is enabled.

For a controller **with** the Autozero function enabled, the damper is:

- Held still during calibration
- Driven towards closed for ½ of the actuator's configured Motor Timing at start-up or on return from power loss

For a controller **without** the Autozero function enabled, the damper is commanded closed:

- During calibration to get a zero airflow reading
- At start-up or on return from power loss

Tuning the Flow Loops

1. Set VOL DIF STPT to 0.
2. Change the flow by commanding SUP STPT and examine the response. If the airflow oscillates or overshoots significantly, or if the supply damper oscillates, reduce the gain (SUP P GAIN). If it takes too long to reach the setpoint, increase SUP P GAIN. Try different values—it should move accurately and with stability. When the desired performance is achieved, release SUP STPT.
3. Repeat the process for GEX STPT.
4. Release VOL DIF STPT.



⚠ CAUTION

Adjusting P gains (supply and/or exhaust) to values greater than 0.1 may cause system instability.

Setting Discharge Temperature Control

If the application is configured for Mode 1(no discharge control), then skip this section. (The application operates in Mode 1 if DISCH P GAIN and DISCH I GAIN both equal 0.)

If the discharge temperature limits are called out in the specification, set DIS TEMP MIN and DIS TEMP MAX according to the specification. If they are not called out, then set the limits according to the desired HVAC system operation. For example, from 55°F to 80°F,

1. Set DIS TEMP MIN to match the temperature supplied by the air handler. It should be set a few degrees lower than the air handler temperature. This will prevent undesired heating if there is some discrepancy between the sensor in the air handler and the one in the supply terminal.
2. Set DIS TEMP MAX should be set according to the heating function required.

- ⇒ Many lab rooms do not need “heat,” meaning they never need supply air to come in above the room temperature setpoint. The reheat equipment only serves to reduce the cooling effect of the supply airflow. In this case, set DIS TEMP MAX a few degrees higher than the room temperature setpoint.
 - ⇒ Rooms with significant exposure to cold outside conditions may call for discharge temperatures significantly above the room temperature. In these rooms, DIS TEMP MAX should be set to the warmest discharge temperature desired for the heating function—for example, 90 degrees
3. Check the operation of the discharge temperature loop by overriding DISCH STPT and observing the response of DIS TEMP AI5. Tune the discharge temperature loop if necessary.
 - ⇒ The discharge temperature loop is more sensitive at low airflow than at high airflow. Check tuning at a low flow (such as minimum) by overriding the setpoint and observing the response of the discharge temperature.
 - ⇒ Overshoot is acceptable as a suggested response (even 5 to 10 degrees), but it should dampen out within 1 or 2 cycles. Small sustained oscillations may be acceptable if they do not overwork the valve. If acceptable performance is achieved at low flow, then the system should be stable, but not too slow at high flow.
 4. Release DISCH STPT.

**NOTE:**

Advanced PID algorithms have been implemented at and near the setpoint to minimize actuator repositioning.

Selecting Options for Room Unit Setpoints

In addition to the base room temperature setpoints that should be entered above, when STPT DIAL = YES, the following options are provided for room units using Standard/Absolute or Warmer/Cooler temperature setpoints, depending on the room unit provided.

The following sections provide the setup configurations based on desired room unit setpoint option:

- Standard/Absolute Setpoints Mode (Digital Room Units [→ 19])
- Warmer/Cooling Setpoints Mode (Digital Room Units [→ 20])
- Standard/Absolute Setpoints Mode (Analog or Digital Room Units [→ 21])
- Warmer/Cooling Setpoints Mode (Analog Room Units) [→ 22]

**NOTE:**

For all of these configurations, if a zero shift of setpoint is specified when changing from heating to cooling, set DAY CLG STPT = DAY HTG STPT. This may not be in compliance with various energy and control standards.

Standard/Absolute Setpoint Mode (Digital Room Unit)

Digital Room Unit (2200/2300 Series Firmware Revision 26 and later)

The setpoint value entered on the room unit will be equal to the RM STPT DIAL and will be used for CTL STPT.

1. Set STPT DIAL = **YES**.
2. Set STPT SPAN = **0**.
3. Set SENSOR SEL = **1** (additive value)
Enables Room Unit Temperature and setpoint options. Other room unit options can then be added as needed. See *Setting SENSOR SEL*.
4. Set RM STPT MIN and RM STPT MAX to a limit range for setpoint adjustment.
5. Set DAY CLG STPT and DAY HTG STPT to the initial values to be used by the room unit and to establish the heating/cooling setpoint and shift.

Configuration values used by the digital room unit are sent from the points configured above in the PTEC and do not need to be individually entered into the room unit. These include, SET PT MIN, SET PT MAX and SEL PT DIS (display option).

Example

DAY CLG STPT = 74, DAY HTG STPT = 70

In cooling mode, the current room setpoint in RM STPT DIAL displays when you press a setpoint UP/DOWN button. You can change the displayed value and the RM STPT DIAL value within the min/max limits.

When you press the UP button to the new cooling setpoint of 78 (an increase from the base cooling setpoint of plus 4 degrees), it displays in RM STPT DIAL. When the controller switches to heating mode, the RM STPT DIAL displays the DAY HTG STPT, also offset by plus 4 degrees (74).

In this Standard/Absolute configuration, the value of RM STPT DIAL will display the actual control setpoint.

Warmer/Cooler Setpoint Mode (Digital Room Unit)

Digital Room Unit (2200/2300 Series Firmware Revision 26 and later)



NOTE:

The revision number displays for 5 seconds when the room unit is first powered up or when a laptop is disconnected.

Digital Room Units (Firmware Revision 26 and later) will continue to display and update the room temperature sensor values when a laptop is connected.

The room unit setpoint shift (warmer/cooler) will be used to set the RM STPT DIAL temperature and will be used for CTL STPT.

1. Set STPT DIAL = **YES**.
2. Set STPT SPAN = **1** (or greater).
3. Set SENSOR SEL = **1** (additive value)
Enables Room Unit Temperature and setpoint options. Other room unit options can then be added as needed. See *Setting SENSOR SEL*.

4. Set RM STPT MIN and RM STPT MAX to a limit range for setpoint adjustment.
5. Set DAY CLG STPT and DAY HTG STPT to the initial values to be used by the room unit and to establish the initial heating/cooling setpoint shift.

Configuration values used by the digital room unit are sent from the points configured above in the PTEC and do not need to be individually entered into the room unit. These include, SET PT MIN, SET PT MAX and SEL PT DIS (display option).

Example

DAY CLG STPT = 74, DAY HTG STPT = 70; STPT SPAN = 2

In the warmer/cooler configuration, while in cooling mode, when you press the UP or DOWN buttons the graphic display indicates the current shift, if any. You can change the graphic display in two step increments by pressing the UP or DOWN buttons. Press UP (warmer) by two increments (the maximum shift allowed with the setup) and the RM STPT DIAL will display the new cooling setpoint of 76°F; (a shift from the base cooling setpoint of 72°F). When the controller switches to heating mode, the RM STPT DIAL displays the DAY HTG STPT, which is also offset by plus + degrees (72°F), while the room unit graphic display maintains its + 2 degree shift.

RM STPT DIAL value will be limited to RM STPT MIN and RM STPT MAX values.

In this warmer/cooler configuration, the value of RM STPT DIAL displays the actual control setpoint.

Standard/Absolute Setpoint Mode (Analog or Digital Room Unit)

Analog (1000 Series) or Digital Room Units (Firmware Revision 25 or earlier)



NOTE:

The revision number displays for 5 seconds when the room unit is first powered up.

When configuring these devices, the CTL STPT is an offset calculation from the value set on the room unit. This offset is established by the difference between the DAY CLG STPT and the DAY HTG STPT. The value on the RM STPT DIAL, as set by the room unit, is the midpoint of this offset.

1. Set STPT DIAL = **YES**.
2. Set STPT SPAN = **0**.
3. Do one of the following:
 - Digital Room Unit: Set SENSOR SEL = **1** for Digital Room units (additive value)
Enables Room Unit Temperature and setpoint options. Other room unit options can then be added as needed. See *Setting SENSOR SEL*.
 - Analog Room Unit: Set SENSOR SEL = **0** for Analog Room units (additive value)
Disables Digital Room Unit Temperature and setpoint options. Other sensor select options for type of thermistor used can then be added as needed. See *Setting SENSOR SEL*.
4. Set RM STPT MIN and RM STPT MAX to limit range for setpoint adjustment.

5. Set DAY CLG STPT and DAY HTG STPT to establish the heating/cooling deadband only (actual value are not used to establish CTL STPT).

Example

DAY CLG STPT = 74, DAY HTG STPT = 70

This provides a setpoint deadband of 4 degrees.

In either cooling or heating mode, the RM STPT DIAL displays the value set by the room unit (limited by RM STPT MIN and MAX).

- In cooling mode, CTL STPT is RM STPT DIAL + 0.5 * setpoint deadband
- In the heating mode, CTL STPT is RM STPT DIAL – 0.5 * setpoint deadband

Example

When the user selects a setpoint on the room unit of 78 degrees, it will display in RM STPT DIAL. However, the control setpoint will be offset from this value. In cooling mode, CTL STPT will be $78 + 2 = 80$ degrees, and in heating mode CTL STPT will be $78 - 2 = 76$ degrees.

The displayed temperature setpoint on the room unit and the value of RM STPT DIAL will display MID POINT of the actual control setpoints.

Warmer/Cooler Setpoint Mode (Analog Room Unit Only)

Analog Room Unit (1000 Series)

The room unit setpoint shift (warmer/cooler) will be used to set the RM STPT DIAL temperature and will be used for CTL STPT.

1. Set STPT DIAL = YES.
2. Set STPT SPAN = 1 (or greater).
3. Set SENSOR SEL = 0 (additive value)
Disables Digital Room Unit Temperature and setpoint options. Other sensor select options for type of thermistor used can then be added as needed. See *Setting SENSOR SEL*.
4. In this option, RM STPT MIN and RM STPT MAX are not used to limit setpoint range (this is accomplished by the STPT SPAN adjustment).
5. Set DAY CLG STPT and DAY HTG STPT to the initial values to be used by the room unit and to establish the initial heating/cooling setpoint shift.

The analog room unit setpoint slider is mapped to + and – the STPT SPAN configured.

When the slider is at mid point, there is no shift in cooling or heating setpoint used by CTL STPT and displayed in RM STPT DIAL.

Example

DAY CLG STPT = 74, DAY HTG STPT = 70; STPT SPAN = 4

In the warmer/cooler configuration, while in cooling mode, when you move the slider half way up to the top (a 2 degree shift), the CTL STPT and RM STPT DIAL display the new cooling setpoint of 76°F (a shift from the base cooling setpoint of 74°F). When the controller switches to heating mode, CTL STPT and RM STPT DIAL displays the DAY HTG STPT, which is also offset by + 2 degrees (72°F), while the slider remains at the previous position.

In this warmer/cooler configuration, the value of RM STPT DIAL displays the actual control setpoint.

Setting STPT SPAN

Set STPT SPAN = 0 for Room Unit setpoint use as standard (absolute values for example, 74 F). For configurations for warmer/cooler (per *Selecting Options for Room Unit Setpoints*), set STPT SPAN = 1 degree or greater (for example, STPT SPAN = 2 will allow -2 to +2 degrees from the current heating or cooling setpoint).

Setting Room Temperature Control

To set room temperature control, enter the room temperature setpoint (RM STPT DIAL) or set the thermostat dial. The room temperature should settle at the setpoint with very little oscillation within an hour. If it does not settle out or reach the setpoint, adjust the room temperature loop gains.



NOTE:

Advanced PID algorithms have been implemented at and near the setpoint to minimize actuator repositioning.



NOTE:

When using a Series 2000 Room Thermostat:

During **unoccupied mode**, you cannot change the Room Setpoint using a Siemens Industry Series 2000 thermostat. Any attempt to change Room Setpoints during unoccupied mode using a Series 2000 stat will be ignored.

During **occupied mode**, the Room Setpoint can be changed using a Series 2000 stat. However, if it is, then the controller initial values should be uploaded to the field panel; otherwise, the controller will not keep the adjusted Room Setpoint value upon return from a power failure.

For more information, contact your local Siemens Industry representative.

Room Temperature Offset (Optional)

TEMP OFFSET is a user-adjustable offset that will compensate for deviations between the value of ROOM TEMP and the actual room temperature. This correct value is displays in CTL TEMP.

CTL TEMP = ROOM TEMP + TEMP OFFSET

Example

If the actual room temperature is 72.0°F, and the value of ROOM TEMP is 73.0°F, then the value entered into TEMP OFFSET is -1.0. In this case, the value of ROOM TEMP would read 73.0°F, but the value of CTL TEMP would read 72.0°F.



NOTE:

Update each controller at the field panel immediately after you have completed the controller start-up procedures and made all other changes to the controller's point database, including balancing, tuning, and so on.

Room Temperature Setpoint Limits

If the room temperature sensor has a setpoint dial that will be used, set RM STPT MIN and RM STPT MAX for the minimum and maximum allowable room temperature set point values, respectively. Common values for these points are 65°F (18°C) for RM STPT MIN and 80°F (27°C) for RM STPT MAX.



NOTE:

If CTL STPT is going to be controlled from a field panel, this section can be skipped. When CTL STPT is overridden or controlled by a field panel, RM STPT MIN/MAX are ignored.

Setting RH Calculation

Inputs



NOTE:

The AI 3/AI 4 current voltage switch is used to properly set an input of 0-10V or 4-20 mA. (This is the switch on the controller, not an actual point.)

AI 3 / AI 4 - Ranges from 0-10V or 4-20 mA depending on the value of the voltage / current switch for AI 3 (or AI 4).

RH CONFIG - This is an enumerated value used for selecting the physical RH input as well as enabling and disabling the RH control.

Outputs

RM RH - The value, in percentage, of RH (humidification control) at the RM sensor.

The point RM RH is assigned using the percentage value from AI 3 (or AI 4) or it may be overridden by a digital room stat.

RH CONFIG is an enumerated analog point that has the following four mode values:

- **0** - RH control is totally disabled.
- **1** - RH control is enabled. AI 3 and AI 4 are both spare. The value of RM RH is used for RH control and in this mode the value of RM RH is set using PPCL from a field panel or by a digital room stat.
- **3** - RH control is enabled. AI 3 is the input used for calculating RM RH. AI 4 is spare.
- **4** - RH control is enabled. AI 4 is the input used for calculating RM RH. AI 3 is spare.

If RM RH is overridden while in modes 1, 3, or 4, the overridden value is used for RH control purposes.

If RM RH is overridden while in mode 0, there is to be no RH control even if RM RH is overridden to some high value that normally would result in RH control.

Entering a value other than one of these four valid values will return 0; no RH control.



NOTE:

Mode 2 is intentionally skipped so that modes 3 and 4 can be used for inputs 3 and 4 respectively.

Setting SENSOR SEL

SENSOR SEL is a configurable, enumerated point (values are additive). This point tells the controller what type of room unit is being used and how to handle loss of communication, for more information see Fail Mode Operation. It also provides the ability to enable the optional RH and CO2 sensors and indicates which thermistor type is connected.

Room Temperature, Setpoint, RH and CO2

- When the digital room unit (Series 2200/2300) is used, SENSOR SEL selects the source for temperature and setpoint and enables a loss of communications indication:
 - 1 = enables supervision (from the room unit) for fail communications for temperature and setpoint.
 - 2 = enables supervision (from the room unit) for fail communications for relative humidity.
 - 4 = enables supervision (from the room unit) for fail communications for CO2.
- When the analog room unit (Series 1000/2000) is used, SENSOR SEL values for temperature/setpoint, relative humidity and CO2 should be left at their default values (0).

Thermistor Inputs

- Default for input is 10K.
- To enable 100K Ω thermistor on input, see the following table for additive values.

Setting HC.ENDIS

HC.ENDIS determines whether the application is heating only, cooling only, or if it uses both heating and cooling modes. Set HC.ENDIS to the desired value.

- 3 = heating and cooling (default)
- 1 = heating only
- 2 = cooling only

REHEAT START, REHEAT END, FLOW START, FLOW END (Optional)

In the heating mode, flow can be held constant while the heating is modulated, or can ramp from minimum flow to maximum flow before, during, or after the heat modulation.

The default application setting is for flow to be held at heating flow minimum while heat modulates from full off to full on. The default point values are as follows:

- REHEAT START = 0
REHEAT END = 100
- FLOW START = 0
FLOW END = 0

To increase flow from min to max in parallel with heat modulating from full off to full on, set:

- REHEAT START = 0
REHEAT END = 100
- FLOW START = 0
FLOW END = 100

To sequence flow so that it increases from min to max only after reheat has modulated from full off to full on, set:

- REHEAT START = 0
REHEAT END = 50
- FLOW START = 50
FLOW END = 100

To overlap the flow and reheat, so that heating begins modulating before flow starts increasing, and then heating reaches full on while flow is still increasing, set:

- REHEAT START = 0
REHEAT END = 70
- FLOW START = 30
FLOW END = 100

The above values are one set of typical examples only. See *Application Guide TEC-0668.08* (140-1059) for complete information on how the FLOW START/END and REHEAT START/END points work together to coordinate heating flow and reheat modulation.

Configuring Perimeter Radiation Heating (Optional)

If you understand how RAD START and RAD END function in 6773, then set them to desired values and skip the remaining text in this section. Otherwise, read the remainder of this section and then set RAD START and RAD END to desired values. Additional information on Perimeter Radiation is also available in the application guide.

If necessary, see *Setting the Mode of Operation* to determine the operating mode of the application.

If the application operates in Mode 1 or Mode 2, then RAD START and RAD END both = 0 and this section can be skipped because perimeter radiation is disabled.

If Mode 3 is active then perimeter radiation is controlled and the reheat signal (0-100) can be divided into three stages.

- **Stage 1** – Discharge temperature rises from discharge temp minimum (DIS TEMP MIN) to room setpoint (CTL STPT). Perimeter radiation is off.
- **Stage 2** – Discharge holds at room setpoint while perimeter radiation modulates from full off to full on.
- **Stage 3** – Perimeter radiation is full on while the discharge temperature modulates from room setpoint to discharge max (DIS TEMP MAX).

The values of RAD START and RAD END establish the proportion of the heating effort allocated to stage 2, the radiation heating portion. For example, with the default values of RAD START = 30 and RAD END = 60, as the need for heat increases from 0 to 100, the first 30% of that need will be met with stage 1 (discharge increasing from min to room temperature setpoint, the next 30% of that need will be met with modulating perimeter radiation heating, and the last 40% will be met with discharge air increasing beyond room temperature setpoint as perimeter radiation remains full on.



NOTE:

The values for RAD START and RAD END should be chosen based on the relative heat contribution by the box reheat compared to the radiation heating. If the room heating is predominately by radiation, then the radiation stage 2 should be allocated a higher percentage. This means a greater “range” between RAD START and RAD END. For example, instead of the default of RAD START = 30 and RAD END = 60, which is a range of 30 to 60, you could configure a range of 30 to 85, or 15 to 80—these are just examples. Similarly, if box reheat is the predominant source of heat, then the radiation stage should be allocated a lower percentage.

One other consideration is the relative sizes of stage 1 versus stage 3.

For example, if,

- DIS TEMP MIN = 50
- CTL STPT (room setpoint) = 70
- DIS TEMP MAX = 90

then the difference from 50 to 70 is the same as 70 to 90. The percentage allocated to stage 1 should be about the same percentage as allocated to stage 3.

However, if,

- DIS TEMP MIN = 55
- CTL STPT (room setpoint) = 70
- DIS TEMP MAX = 110

then the percentage allocated to stage 1 should be reduced and the percentage allocated to stage 3 should be increased.

Setting Room Pressurization

1. Set OTHER EXH and OTHER SUP to take into account any supply or exhaust airflow values from equipment or sources not connected to the TEC.
If these airflow values change slowly or predictably (for example, VAV temp control and/or occ/unoc differences), steps should be taken to have the changes sent over the network to update OTHER EXH and OTHER SUP with the new values. This can be done separately from the startup instructions.
2. Verify correct pressurization in the four airflow operating conditions that follow.
Verify that flow differential VOL DIFFRNC matches desired VOL DIF STPT. To achieve the required conditions, first set TEMP CTL VOL equal to CLG FLO MIN for minimum cooling, then set TEMP CTL VOL equal to CLG FLO MAX for maximum cooling.
 - Maximum external exhaust(s), maximum cooling
 - Minimum external exhaust(s), maximum cooling
 - Maximum external exhaust(s), minimum cooling
 - Minimum external exhaust(s), minimum cooling

When all conditions have been checked, release TEMP CTL VOL.

AVS FAILMODE

AVS FAILMODE is an enumerated point that describes how the supply Damper and the general exhaust Damper will respond if one or both Air Velocity Sensors (AVS) fail. It can handle both positively pressurized rooms and negatively pressurized rooms.

The default value of AVS FAILMODE is 0. This default causes both the supply and general exhaust to hold their current position when an AVS fails. Open Supply, Open Exhaust and Close Supply, Close Exhaust are not defined AVS FAILMODE states.

Tables *AVS Failure and AVS FAILMODE Values* shows what the application does when AVS FAILMODE is at a particular value and an air velocity sensor(s) has failed.

Set AVS FAILMODE to the desired value.

AVS Failure and AVS FAILMODE Table Values.	
	AVS FAILMODE
0 (default)	Hold Supply, Hold General Exhaust
1	Hold Supply, Open General Exhaust
2	Hold Supply, Close General Exhaust
3	Open Supply, Hold General Exhaust
4	Close Supply, Hold General Exhaust
5	Close Supply, Open General Exhaust
6	Open Supply, Close General Exhaust
7	VENTILATION
8	PRESSURE



⚠ CAUTION

If AVS FAILMODE is set to a value of 7 or 8, then VOL DIF MIN and VOL DIF MAX values must have the same sign. They must both be positive, or they must both be negative. Otherwise, damper(s) will respond incorrectly.

Alarms

The controller is equipped with ventilation and pressurization alarms. It does not contain temperature alarms.

Ventilation Alarm

1. Set P1 V ALM LVL to the specified value for the PRS1 pressure state. It may be specified in air changes per hour. If so, convert it to cfm (lps). If no ventilation alarm is required, set P1 V ALM LVL to 0.
2. Set P2 V ALM LVL to the specified value for the PRS2 pressure state. If no minimum ventilation is stated for the second pressure state, use the same value as

used for the first pressure state. If ventilation alarms are not required during unoccupied mode, set P2 V ALM LVL to 0.



NOTE:

Setting the alarm level to zero only disables the alarm on low TOTL SUPPLY. Even if the alarm level is set to zero, the ventilation alarm will still turn on if:

- SUP VOL stays below the currently active supply minimum for a time at least equal to VENT ALM DEL and/or
- GEX VOL stays below the currently active general exhaust box minimum for a time at least equal to VENT ALM DEL.

3. For the alarm delay, set VENT ALM DEL to the value specified. If no value is specified, use the default value.

Hardware Switch

The hardware alarm switch is ALM SWIT DI6. If the specification requires that the controller pass alarms from other equipment (connected to ALM SWIT DI6) to a local alarm device using ALARM DO7, then set ALARM ENA to a value that enables the Alarm Switch (2, 3, 6, or 7).

Pressurization Alarm

1. To set the differential flow alarm, set DIF ALM DBD to the alarm level specified. If no value is specified, use the default value, provided that the warning that follows is satisfied.



WARNING

To ensure that VOL DIF ALM turns on before the pressure in the room changes sign, DIF ALM DBD must be less than the absolute value of VOL DIF STPT.

For example, if negative pressure is desired and VOL DIF STPT equals 70 cfm and DIF ALM DBD is 200 cfm, then the room could go positive by almost 130 cfm without the pressure alarm turning on. In this case, if you want the alarm to turn on before the room changes sign, then you must set DIF ALM DBD to be less than 70 cfm.

2. For delay time, set DIF ALM DEL to the value specified. If no value is specified, start with the default value of 30 seconds. Adjust as required to eliminate nuisance alarms.
3. Set ALARM ENA to a value that enables the pressure alarm (4, 5, 6, or 7) if the specification requires annunciation of the pressurization alarm through a local alarm device connected to ALARM DO7.



NOTE:

VOL DIF ALM is the output point that indicates an alarm condition.



CAUTION

To ensure that VOL DIF ALM turns on before the pressure in the room changes sign, DIF ALM DBD must be less than the absolute value of VOL DIF STPT.

The pressurization alarm, VOL DIF ALM, indicates that VOL DIFFRNC has fallen below the active pressure state alarm level for a time greater than or equal to DIF ALM DEL, or that the controller can't calculate the flow difference because it has lost a flow signal.

1. Set DIF ALM DBD to a value less than the absolute value of VOL DIF STPT. Since VOL DIF STPT gets its value from PRS1DIF STPT or PRS2DIF STPT, DIF ALM DBD must be set to a value less than whichever of the two points (PRS1DIF STPT or PRS2DIF STPT) has a smaller absolute value.
2. Set DIF ALM DEL to desired value. This is the pressurization alarm delay point that may be of use in the prevention of nuisance alarms.

Local Annunciation

ALARM ENA does not enable alarms. It only determines whether a particular alarm activates ALARM DO7. The *ALARM ENA Values Table* shows what is enabled when ALARM ENA is at a particular value.

If ALN ENA is set to any value other than 0, 1, 4, or 5, it will display a 0 and like it was set to 0.



NOTE:

If the job specification requires annunciation of the ventilation alarm through a local alarm device connected to ALARM DO7, then ALARM ENA must be set to a value that enables the ventilation alarm (1 or 5).

- Set ALARM ENA to desired value.

ALARM ENA Values.	
	ALARM ENA
0 default	ALARM DO7 will not be activated.
1	Vent Alarm activate ALARM DO7.
4	Vol Dif Alarm activate ALARM DO7.
ALM ENA is additive. For example, if ALM ENA equals 5, then either a ventilation or a pressurization alarm would activate ALARM DO7.	



CAUTION

DO NOT override ALARM DO7 or use it as a spare output point when ALARM ENA is not set to zero.

Network Alarms

If must indicate other alarms in the local ALARM DO7, they may be programmed in the field panel to work through NET ALM CMD. No setup is required at the controller to enable this function.

Configuring BACnet Parameters

Using WCIS, do the following:

1. From the **Device** menu, select **Device Properties** to configure BACnet parameters.
2. In the **Object** section, enter information for the following fields:
 - **Instance Number** – unique to BACnet network (valid values are 0 through 4,194,303).
 - **Object Name** – unique to BACnet network (30 alphanumeric character limit in RAD50).
 - **Device Description** – description of controller (60 alphanumeric character limit).
 - **Device Location** – physical location of controller (60 alphanumeric character limit).
3. In the **BACnet Communication Settings** section:
 - **Set the CIS/MMI Command Priority to the desired value.**
 - Set **Baud Rate** to the MS/TP network baud rate. Options are; 9600, 19200, 38400 or 76800.
4. In the **MSTP Slave** section do one of the following:
 - Check the **MS/TP Slave** check box if the controller is to function as a slave device (when address range is 0 through 127).
 - Set the **Max Master Node** number.
5. In the **Device Settings** section (configuring the Room Unit port), do one of the following:
 - If using a sensing only Room Unit, the baud rate can be 1200 to 38400. Use **38400** for optimal use with WCIS.
 - If using a communicating digital Room Unit, the baud rate uses whatever rate the network is using or sets it to 19200 after the controller address is configured.
6. Press the **Write** button. The controller accepts the configuration values and then resets.
 - ⇒ When the BACnet MS/TP TEC is successfully installed, the RX and TX LEDs continuously flashes On/Off rapidly. This indicates a proper communication with other devices on the network.

Auto Discover and Auto Addressing

An improved commissioning workflow has been designed for all BACnet PTEC controllers (standard 66.xx applications) along with WCIS (Revision 4.0 and later). This provides the option to use the MS/TP network (using the field panel or a router) and the WCIS tool to discover and auto-address each controller. For more information, see the *WCIS Online Help*.



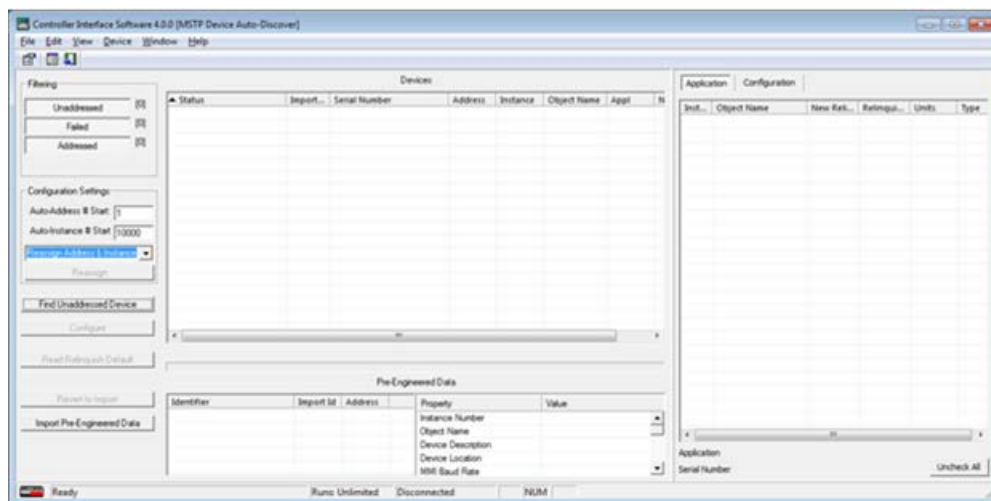
NOTE:

The current workflow will continue to support setting the baud rate and address for each controller using the HMI port or at the room unit.

- ▷ All BACnet PTEC controllers (standard 66.xx applications) have an internal unique serial number and a two part serial number label.
- 1. Connect WCIS to the field panel or use a router connected to the MS/TP network.
- 2. Assign one PTEC a valid address (using the serial number). This will establish and set the baud rate for the entire network.

Auto Discovery allows you to automatically discover and identify PTEC/ATEC controllers on the BACnet MS/TP Network. There are two basic configurations:

- Devices not configured with an address. (Devices are discovered by their unique serial number.)
- Devices configured with an address and available for modification.



Filtering

These buttons allow you to select what you see in the **Auto-discovery** window. All three buttons are selected by default.

- **Unaddressed** - Displays unaddressed devices
- **Failed** - Displays failed devices
- **Addressed** - Displays addressed devices

Configuration Settings

- **Auto Address # Start** - Beginning address number. An address is reserved for each discovered device starting with this number.
- **Auto Instance # Start** - Beginning instance number. An instance number is reserved for each discovered device starting with this number.
- **Reassign Address and Instance** drop-down menu - Reassigns the address and instance number of the selected device(s).
- **Reassign Address Only** drop-down menu - Reassigns the address of the selected device(s).
- **Reassign Instance Only** drop-down menu - Reassigns the instance of the selected device(s).

Auto-Discovery

- **Find Unaddressed Device** - Searches the connected network for all devices (addressed and unaddressed).
- **Configure** - Sends modified application data to the controller(s).
- **Read Relinquish Default** - Refreshes relinquish default column of the Application tab with values from the controller.
- **Revert to Import** - Returns to Pre-Engineered Data after changes have been made.
- **Import Pre-Engineered Data** - A .csv file can be used to set initial values in the controller. The file can be taken from Commissioning Tool or exported from Excel. See Commissioning a Controller [→ 35].

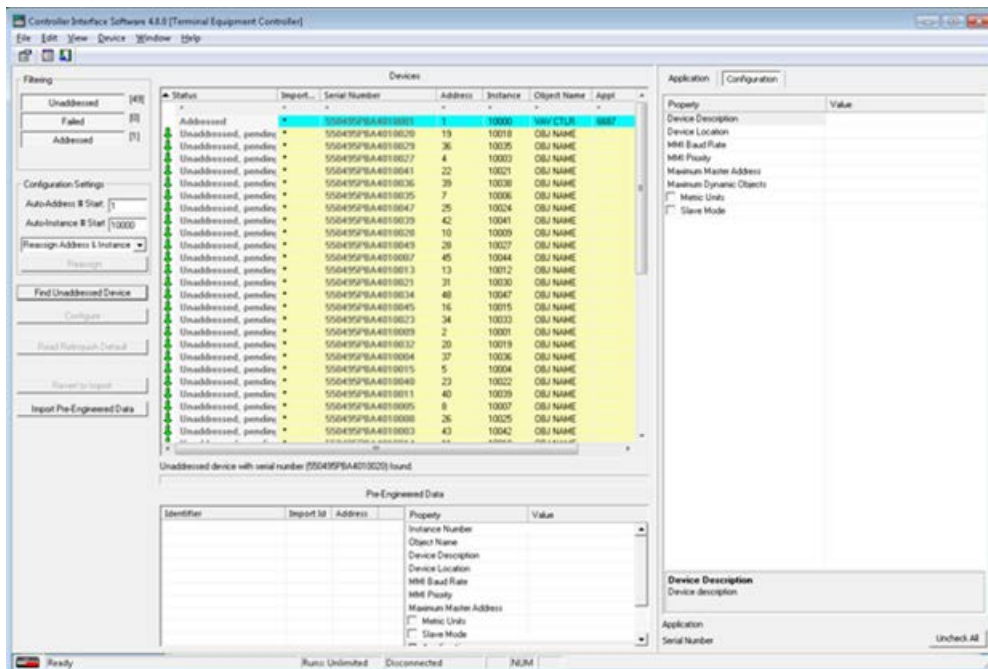
Auto-Discovery Procedure

- Click **Find Unaddressed Device**.
 - ⇒ If a NAM (Network Asset Manager) device is not defined, the **NAM Configuration** window displays. All new TECs can be assigned as a NAM.

- Enter the serial number (found on print from electrician).
- Enter a unique (unused) address (0 through 127).
- Click **OK**.
- ⇒ The device is assigned as the NAM for the network with the address you specified.
- ⇒ The NAM device auto-discovers all other devices on the network.
- ⇒ WCIS displays all devices.

Before You Begin

Auto Discover and Auto Addressing



Configuring Discovered Devices

Each device on the network must have unique identifiers in the following fields:

- Address
- Instance
- Object Name - 30 alphanumeric character limit for Siemens field panels.

1. To change any of these fields, click in that field and enter the desired value.

Status	Import	Serial Number	Address	Instance	Object Name	Appl
Addressed, pending	*	550495PBA4010001	1	10000	VAV CTRL	1000
Unaddressed, pending	*	550495PBA4010020	19	10018	OBJ NAME	
Unaddressed, pending	*	550495PBA4010029	36	10035	OBJ NAME	
Unaddressed, pending	*	550495PBA4010027	4	10003	OBJ NAME	
Unaddressed, pending	*	550495PBA4010041	22	10021	OBJ NAME	
Unaddressed, pending	*	550495PBA4010036	39	10038	OBJ NAME	
Unaddressed, pending	*	550495PBA4010025	7	10006	OBJ NAME	
Unaddressed, pending	*	550495PBA4010047	25	10024	OBJ NAME	
Unaddressed, pending	*	550495PBA4010039	42	10041	OBJ NAME	
Unaddressed, pending	*	550495PBA4010028	10	10009	OBJ NAME	

2. When all fields are defined, click **Configure**.

Status	Import	Serial Number	Address	Instance	Object Name	Appl
Addressed, pending	*	550495PBA4010001	1	10000	VAV CTRL	1000
Addressed, failed	*	550495PBA4010020	19	10018	TIC RMS FLR1	1000
Unaddressed, pending	*	550495PBA4010029	36	10035	OBJ NAME	
Unaddressed, pending	*	550495PBA4010027	4	10003	OBJ NAME	
Unaddressed, pending	*	550495PBA4010041	22	10021	OBJ NAME	
Unaddressed, pending	*	550495PBA4010036	39	10038	OBJ NAME	
Unaddressed, pending	*	550495PBA4010025	7	10006	OBJ NAME	
Unaddressed, pending	*	550495PBA4010047	25	10024	OBJ NAME	
Unaddressed, pending	*	550495PBA4010039	42	10041	OBJ NAME	
Unaddressed, pending	*	550495PBA4010028	10	10009	OBJ NAME	

⇒ All devices defined properly displays Addressed.

⇒ If a device has not been defined properly, it displays Unaddressed and the problem field displays red text.

Status	Import	Serial Number	Address	Instance	Object Name	Appl
Addressed, pending	*	550495PBA4010001	1	10000	VAV CTRL	1000
Addressed, failed	*	550495PBA4010020	19	10018	TIC RMS FLR1	1000
Unaddressed, pending	*	550495PBA4010029	36	10035	OBJ NAME	
Unaddressed, pending	*	550495PBA4010027	4	10003	OBJ NAME	

3. Correct any issues and click **Configure**.

Commissioning a Controller

Learning the Application Point Team

Once a device has been addressed, select your application.

- Do one of the following:
 - Right-click in the **Application** column and select the desired Application.
 - Click **Configure** to load the device for your application.
 - Right-click on the controller and select **Learn Point Team Descriptor**.

Import Data

1. Click the **Import Pre-Engineered Data** button.
 - ⇒ The **Import Configuration Data** dialog box displays.
2. Browse to the desired .csv file and click **Open**.
 - ⇒ The imported files are listed in the **Pre-Engineered Data** section of the **Auto-Discovery** window.

Each line in the window is a grouping of data for a controller. For more information see .csv File Format [→ 36].

Assigning Import Data to Controller

1. Click in the **Import ID** column of the desired controller in the devices section.
2. Select the appropriate **Import ID number** of the **Pre-Engineered Data** you want to assign.
 - ⇒ The **Application** and **Configuration** tabs are updated with the new (Pre-Engineered) data. You can manually change/update any data.

Assigning Import Data to Multiple Controllers

1. Click on the desired **Import Data** from the list in the Pre-Engineered Data section.
2. Select all desired controllers in the Devices window.
3. Right-click the selection in the Devices window and then select **Assign Import Data from Import ID x**.
4. Click **Configure**.
 - ⇒ The Application will load into each controller selected. The **Application** and **Configuration** tabs are updated with the new (Pre-Engineered) data.

Commissioning Multiple Controllers

If you're commissioning multiple controllers with the same application all values can be loaded to each controller selected.

You can select multiple controllers by holding down either the **SHIFT** or **CTRL** key and clicking on multiple controllers listed.

You can configure values for multiple controllers with different applications by first selecting and making changes to one controller and then selecting all controllers and clicking **Configure**.

**NOTE:**

Once you select multiple controllers with different applications the Application tab goes blank. However, WCIS retains all changes and send the data for all selected controllers.

.csv File Format

The .csv file is auto generated from CT (is the old manufacture installed output file) and can be imported into WCIS. It has the following format and must be manually created.

First line must be – **IDENTIFIER, FIELDID, FIELDVAL**; all additional lines will be data in that format.

IDENTIFIER

This field is used to create groupings of data. Each group can be thought of as a collection of information (configuration data and point initial values) that will be loaded into one or more TEC's. The groups cannot be subdivided into smaller collections.

FIELDID

This is the specific data that will be set. All configuration data will have a key word associated with it and all points will be referenced by their point number (object ID). The following is a list of fields:

- ObjectName – Sets the device object name.
- Instance – Sets the device instance number.
- Description – Sets the device description.
- Location – Sets the device location.
- MaxMaster – Sets the device max master.
- MMIBaud – Sets the baud rate of the MMI tool port.
- MMIPriority – Sets priority for P1 commands received through the MMI tool port.
- IsMetric – Sets the units to SI.
- IsSlave – Sets the unit to a MSTP slave device.
- Comment – Creates comments in the file to make it more readable and are not imported into the tool.

FIELDVAL

This value must be set to the FIELDID. The format of this data is specific to the ID.

Description	Acceptable Values
ObjectName	30 RAD50 characters
Instance	0 – 4194302
Description	60 ASCII characters
Location	60 ASCII characters
MaxMaster	1 – 127
Point numbers	Depend on the specific points
MMIBaud	1200, 2400, 4800, 9600, 19200, 38400
MMIPriority	8 – 16

Description	Acceptable Values
IsMetric	0 – No, 1 – Yes
IsSlave	0 – No, 1 – Yes

The Pre-Engineered Data file can be used in different ways. For example, you can create a group or collection of information for every TEC. You can then assign the correct group to the TEC based on the location as indicated by the job schedule. The schedule will display the serial numbers for all TEC's and the location where the TEC was installed. The groups of data are set up for a specific location and you simply select the correct group for the TEC that has the serial number associated with that location.

You can also set up groups that contain information that must be set in multiple TEC's. Select all TEC's that need the specific data and assign the ID.

Sample .csv file:

IDENTIFIER,FIELDID,FIELDVAL

Building100_TEC_VAV001,ObjectName,VAV in Building 100

Building100_TEC_VAV001,Instance,5400

Flashing Controller Firmware



NOTE:

When re-loading/flashing firmware, existing PPCL may no longer function correctly.

FLT Procedure

Use the Firmware Loading Tool (FLT) for this procedure.

1. Connect to the RTS port of the PTEC.
2. Set Communications to **1200 baud**.
3. Click the **Identify** button.
4. Browse to the folder where the new firmware is saved.
5. Double-click the firmware file and then click **Load**.

WCIS Procedure

1. Connect to the RTS port of the PTEC.
2. From the **Device** menu, select **Load TEC Firmware**.
⇒ The **Load TEC Firmware** dialog box displays.
3. Click the **Browse** button.
4. Browse to the folder where the new firmware is saved.
5. Double-click the firmware file and then click **Load**.

The Start-up is complete.

Start-up Notes

This section includes notes on operating with only a supply or general exhaust box.

Issued by
Siemens Industry, Inc.
Building Technologies Division
1000 Deerfield Pkwy
Buffalo Grove IL 60089
Tel. +1 847-215-1000

© Siemens Industry, Inc., 2015
Technical specifications and availability subject to change without notice.